

inStudio

Foundation

SINGLE TOOTH RESTORATIONS
AND MUCH, MUCH MORE.

At the heart of *inStudio Foundation* stands our Versamill 5X-300D precision dental machining center designed to perform reliably with high-precision for the long term. It can process any soft dental material including: zirconia, PMMA wax, PEEK and more.

With *inStudio Foundation* you get a complete, industrial-quality manufacturing solution used by dental laboratories and milling centers around the world but specifically designed to meet the demanding support requirements of dental practices.



INDICATIONS

- Inlays, onlays, copings, crowns, veneers, splints, guides.
- Removable & fixed bridges, models, zirconia bars (with optional modules).
- Process PMMA, zirconia, PEEK composites wax, resins, and more.
- Block sizes up to 40mm.

SPEED WITHOUT SACRIFICE

The strength and rigidity of the Versamill 5X-300D coupled with the undercut machining capability of full 5-Axis control provides perfect fits, great anatomical detail and the best possible restorative margins with faster cycle times and greater tool life.

- Single-unit zirconia crowns in less than 14 minutes.
- Full-arch restorations in as little as 60 minutes.
- 6-implant zirconia implant bridges in less than 105 minutes.

RIGID CONSTRUCTION

- Cast and heavy fabricated aluminum-plate frame.
- Zero-stack tolerance, 5-axis trunnion.
- Liner guides & ballscrews with preloaded bearings.
- Closed loop system with micro-stepper technology and position encoders.

SINTERING

The Whip Mix® SinterPro Sintering Furnace takes sintering to the next level. Multiple programs and multi-stage sintering allow for optimization throughout the process. SinterPro is easy to program, easy to use, and versatile making SinterPro a valuable addition in any dental practice setting.





ULTRA HIGH DEFINITION SCANNING

Foundation utilizes 3Shape 3D dental scanners providing speed and accuracy with a wide selection of intraoral and desktop scanners.

Model Free Workflow with automatic 3-axis, double-sided auto impression scanning. You can simply scan your patient and/or scan the impression immediately upon completion and begin designing.

3Shape's quality hardware and software work together to bring your practice the most comprehensive scanning solutions in the dental industry.

Complete with high-performance, Intel-based, color computer workstation

POWERFUL DENTAL CAD SOFTWARE

Foundation's 3Shape- or exocad-based, cameo CAD software is known for its functionality, speedy operation and ease of use, helping you minimize training costs and maximize productivity. It is reliable and robust even when dealing with complex cases. The speed and flexibility of cameo™ DentalCAD is achieved through harnessing the latest research in the area of organic modeling. Also included is a high-performance color workstation configured to meet *Foundation's* resource requirements.



BASE INDICATIONS

Anatomic Crowns, Simple & Anatomic Copings, Inlays & Onlays, Veneers, Wax-Ups, Telescopic Crowns, Bridge Frameworks, Attachments, and more.

INCLUDED ADDITIONAL MODULES

Bite Splint, Virtual Articulator, Model Creator, Tooth Library, True Smile, Provisional.

OPTIONAL MODULES

Partial Framework, Full Denture, Bar

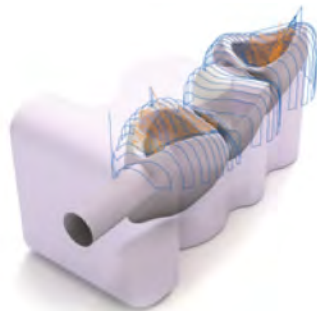
AVAILABLE WITHOUT ANNUAL LICENSING FEES



CAM : PROVEN & FULL-FEATURED

Foundation utilizes hyperDENT CAM software from FOLLOW-ME! Technology Group.

hyperDENT incorporates efficient proven milling cycles from the industrial segment to provide maximum process stability and indication quality, including patent-protected milling strategies used for complex materials ensuring perfect surface quality while maximizing tool life.



OPTIONAL MODULES

Full Denture, Template Generator

As with our Versamill machine technology, we leverage our 40 years of digital design and manufacturing experience - spanning all market segments including the dental industry - to provide additional software enhancements over and above a vendors' standard deliverable product. These unique enhancements, which are not available from any other supplier, provide additional functionality, while assuring unrivaled reliability and increased productivity.

Versamill 5X-300D Specifications

Number of axes:		5 simultaneous
Travel (x, y, z axis):	(mm)	145 x 110 x 85
A Rotational axis:	(degrees)	360 °
B Rotational axis:	(degrees)	±30 °
Drive Mechanism:		Ball screw
Way System:		Linear Guide
Repeatability:	(µm)	±5.0
Spindle Power:	(watts)	AC 0.5kW max
Spindle Speed:	(rpm)	60,000
ATC number of tools:	4.0mm Ø	12
Axis Drive System	Closed-Loop	Microstepper w/Encoder
Blank disc diameter:	(mm)	98.3Ø
Machine size (W x H x L):	(mm)	540 x 580 x 630
Optional Table size (W x H x L):	(mm)	545 x 590 x 950
Weight:	(Kg)	90Kg
Input Power	(VAC/50-60Hz)	100-240 VAC single Ø